

Drug & Medicine Cabinets	98
Abloy® CLIQ™ Remote	107
Controlled Drug Cabinets	108
Drug & Medicine Cupboards	110
Self Administration Cabinets	112
Pharmacy & Vaccine Refrigerators	117

# DRUG & MEDICINE STORAGE



PC085

BS 2881:1989



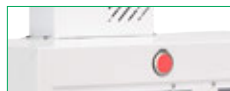
BS 3621



Compatible with  
**ABLOY PROTEC**  
Remote ready. See page 106



LED illuminates  
green when  
door is closed



LED illuminates red when door is  
open, flashes red when open for  
2 ½ minutes

## Standard Shelves & Door Shelves

Dimensions ( w x d x h )	Weight	Shelves/Door Shelves	Right Hand Opening		Left Hand Opening		Compatible CD Cabinets
			With Light*	Without Light	With Light*	Without Light	
500 x 300 x 600mm	29.9kg	3/3	PC015	PC020	PC250	PC255	CD005, CD010
600 x 300 x 600mm	33.9kg	3/3	PC085	PC090	PC310	PC315	CD005, CD010
500 x 300 x 900mm	34.0kg	4/4	PC055	PC060	PC280	PC285	CD005, CD010, CD015
600 x 300 x 900mm	38.0kg	4/4	PC105	PC110	PC330	PC335	CD005, CD010, CD015

\* Transformer casing adds 105mm to overall height

email: sales@bristolmaid.com

fax: +44 (0)1258 455056

## Drug & Medicine Cabinets - Single Door

### Features

- Independently tested to BS2881: 1989 (Security Level One) Specification for Cupboards for the Storage of Medicines in Health Care Premises
- BS3621 anti pick and drill, key retaining five pin cylinder lock (supplied with 3 keys)
- Available with...
  - Adjustable & removable standard shelves (190mm deep) & door shelves (75mm deep)
  - Adjustable & removable deep shelves (250mm deep)
- Key profile unique to Hospital Metalcraft Ltd, offering 250,000 differs per profile
- Compatible with ABLOY® CLIQ™ Remote, integrating electronics into high security mechanical disc cylinders & keys, combining electronic security and remote management in real time
- 12v DC LED lighting/warning system (model dependent) with volt-free contact to allow connection to light/nurse call systems, CE marked & conforms to the low voltage directives 73/23/EEC & 89/336/EC
- Lighting transformer casing adds 105mm to overall height (model dependent)
- 0.9mm mild steel welded construction
- Mounting holes provided in back (fixings not included)
- Modular design allows for easy interchange with HTM 63 storage systems
- Compatible with our range of CD cabinets for the storage of Controlled Drugs (see tables)

### Standard Colours

- Paint - White

### Options

- Digital Locking
- Sloping Top
- Remote Light Box

See Page  
104 For  
Options



PC090



PC120

BS 2881:1989



BS 3621



Compatible with  
**ABLOY PROTEC**  
Remote ready. See page 106



LED illuminates green when  
door is closed



LED illuminates red when door is  
open, flashes red when open for  
2 ½ minutes

See Page  
104 For  
Options



PC095 - Shown  
with compatible  
CD005



PC115

Deep Shelves

Dimensions ( w x d x h )	Weight	Shelves	Nomad® Cassette Capacity	Right Hand Opening		Left Hand Opening		Compatible CD Cabinets
				With Light*	Without Light	With Light*	Without Light	
300 x 300 x 600mm	16.9kg	3	13	PC005	PC010	PC240	PC245	CD005
500 x 300 x 600mm	29.9kg	3	24	PC025	PC030	PC260	PC265	CD005, CD010
600 x 300 x 600mm	33.9kg	3	32	PC095	PC100	PC320	PC325	CD005, CD010
500 x 300 x 900mm	34.9kg	4	35	PC065	PC070	PC290	PC295	CD005, CD010, CD015
600 x 300 x 900mm	38.9kg	4	44	PC115	PC120	PC340	PC345	CD005, CD010, CD015

\* Transformer casing adds 105mm to overall height

BS 2881:1989

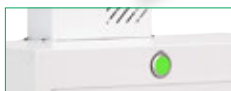
BS 3621



Compatible with  
**ABLOY PROTEC**  
Remote ready. See page 106



PC135



LED illuminates  
green when  
door is closed



LED illuminates red when door is  
open, flashes red when open for  
2 ½ minutes

## Standard Shelves & Door Shelves

Dimensions ( w x d x h )	Weight	Shelves/Door Shelves	Single Lock (Secures Both Doors)		Each Door Fitted With A Lock		Compatible CD Cabinets
			With Light*	Without Light	With Light*	Without Light	
800 x 300 x 600mm	40.9kg	6/5	PC135	PC140	PC360	PC365	CD005, CD010**
1000 x 300 x 600mm	48.9kg	6/6	PC175	PC180	PC400	PC405	CD005, CD010
800 x 300 x 900mm	45.9kg	8/8	PC155	PC160	PC380	PC385	CD005, CD010, CD015
1000 x 300 x 900mm	53.9kg	8/8	PC195	PC200	PC420	PC425	CD005, CD010, CD015

\* Transformer casing adds 105mm to overall height \*\* CD010 not compatible with PC360 & PC365

email: sales@bristolmaid.com

fax: +44 (0)1258 455056

## Drug & Medicine Cabinets - Double Door

### Features

- Independently tested to BS2881: 1989 (Security Level One) Specification for Cupboards for the Storage of Medicines in Health Care Premises
- BS3621 anti pick and drill, key retaining five pin cylinder lock supplied with 3 keys)
- Available with...
  - Adjustable & removable standard shelves (190mm deep) & door shelves (75mm deep)
  - Adjustable & removable deep shelves (250mm deep)
- Key profile unique to Hospital Metalcraft Ltd, offering 250,000 differs per profile
- Compatible with ABLOY® CLIQTM Remote, integrating electronics into high security mechanical disc cylinders & keys, combining electronic security and remote management in real time
- 12v DC LED lighting/warning system (model dependent) with volt-free contact to allow connection to light/nurse call systems, CE marked & conforms to the low voltage directives 73/23/EEC & 89/336/EC
- Lighting transformer casing adds 105mm to overall height (model dependent)
- 0.9mm mild steel welded construction
- Mounting holes provided in back (fixings not included)
- Modular design allows for easy interchange with HTM 63 storage systems
- Compatible with our range of CD cabinets for the storage of Controlled Drugs (see tables)

### Standard Colours

- Paint - White

### Options

- Digital Locking
- Sloping Top
- Remote Light Box

See Page  
104 For  
Options



PC155 with  
compatible CD010



PC170

BS 2881:1989



BS 3621



See Page 104 For Options

Compatible with  
**ABLOY PROTEC**  
Remote ready. See page 106



LED illuminates green when door is closed



LED illuminates red when door is open, flashes red when open for 2 ½ minutes



PC165

Deep Shelves

Dimensions ( w x d x h )	Weight	Shelves	Nomad® Cassette Capacity	Single Lock (Secures Both Doors) With Light*	Single Lock (Secures Both Doors) Without Light	Each Door Fitted With A Lock With Light*	Each Door Fitted With A Lock Without Light	Compatible CD Cabinets
800 x 300 x 600mm	40.9kg	8		PC145	PC150	PC370	PC375	CD005, CD010**
1000 x 300 x 600mm	48.9kg	8	58	PC185	PC190	PC410	PC415	CD005, CD010
800 x 300 x 900mm	45.9kg	8		PC165	PC170	PC390	PC395	CD005, CD010, CD015
1000 x 300 x 900mm	53.9kg	8	80	PC205	PC210	PC430	PC435	CD005, CD010, CD015

\* Transformer casing adds 105mm to overall height \*\* CD010 not compatible with PC370 & PC375





PC045

BS 2881:1989



BS 3621



Compatible with  
**ABLOY PROTEC**  
Remote ready. See page 106



LED illuminates green when  
door is closed



LED illuminates red when door is  
open, flashes red when open for  
2 ½ minutes

## Drug & Medicine Cabinets - Monitored Dosage, MDS Frames

### Features

- Independently tested to BS2881: 1989 (Security Level One) Specification for Cupboards for the Storage of Medicines in Health Care Premises
- BS3621 anti pick and drill, key retaining five pin cylinder lock (supplied with 3 keys)
- Hooks at rear of cabinet support frames for the popular blister pack Monitored Dosage Systems (MDS)
- Key profile unique to Hospital Metalcraft Ltd, offering 250,000 differs per profile
- Compatible with ABLOY® CLIQ™ Remote, integrating electronics into high security mechanical disc cylinders and keys, combining electronic security and remote management in real time
- 12v DC LED lighting/warning system (model dependent) with volt-free contact to allow connection to light/nurse call systems, CE marked and conforms to the low voltage directives 73/23/EEC & 89/336/EC
- Lighting transformer casing adds 105mm to overall height (model dependent)
- 0.9mm mild steel welded construction
- Mounting holes provided in back (fixings not included)
- Modular design allows for easy interchange with HTM 63 storage systems

### Standard Colours

- Paint - White

### Options

- Digital Locking
- Sloping Top
- Remote Light Box

See Page  
104 For  
Options



PC215

### Single Door

Overall Dimensions (w x d x h)	Weight	MDS Frame Capacity	Right Hand Opening		Left Hand Opening	
			With Light*	Without Light	With Light*	Without Light
500 x 300 x 600mm	26.9kg	2	PC045	PC050	PC270	PC275
500 x 300 x 900mm	31.4kg	4	PC075	PC080	PC300	PC305
600 x 300 x 900mm	35.2kg	6	PC125	PC130	PC350	PC355

\* Transformer casing adds 105mm to overall height of cabinet

### Double Door

Overall Dimensions (w x d x h)	Weight	MDS Frame Capacity	Single Lock (Secures Both Doors)		Each Door Fitted With A Lock	
			With Light*	Without Light	With Light*	Without Light
1000 x 300 x 900mm	26.9kg	8	PC215	PC220	PC440	PC445

\* Transformer casing adds 105mm to overall height of cabinet

Drug & Medicine Cabinets - Monitored Dosage, Biodose® Trays

Features

- Independently tested to BS2881: 1989 (Security Level One) Specification for Cupboards for the Storage of Medicines in Health Care Premises
- BS3621 anti pick and drill, key retaining five pin cylinder lock (supplied with 3 keys)
- Runners for the storage of monitored dosage system trays (Biodose®)
- Key profile unique to Hospital Metalcraft Ltd, offering 250,000 differs per profile
- Compatible with ABLOY® CLIQ™ Remote, integrating electronics into high security mechanical disc cylinders and keys, combining electronic security and remote management in real time
- 12v DC LED lighting/warning system (model dependent) with volt-free contact to allow connection to light/nurse call systems, CE marked and conforms to the low voltage directives 73/23/EEC & 89/336/EC
- Lighting transformer casing adds 105mm to overall height (model dependent)
- 0.9mm mild steel welded construction
- Mounting holes provided in back (fixings not included)

Standard Colours

- Paint - White

BS 2881:1989



BS 3621



Compatible with  
**ABLOY PROTEC**  
Remote ready. See page 106



Biodose® Trays Not Supplied



LED illuminates green when door is closed



LED illuminates red when door is open, flashes red when open for 2 ½ minutes

Dimensions (w x d x h)	Weight	Biodose Tray Capacity	Right Hand Opening		Left Hand Opening	
			With Light*	Without Light	With Light*	Without Light
311 x 387 x 750mm	21.9kg	15	MBC005	MBC010	MBC105	MBC110
554 x 387 x 750mm	33.9kg	30	MBC015	MBC020	MBC115	MBC120

\* Transformer casing adds 105mm to overall height of cabinet





## Mechanical Digital Lock

### Features

- Push button mechanical digital lock
- Requires a five digit code to operate (set by customer)
- Cabinets fitted with this lock will not conform to BS2881: 1989 (Security Level One) Specification for Cupboards for the Storage of Medicines in Health Care Premises
- Factory fitted

Item	Description
2LOCK014	Push Button Mechanical Digital Lock



## Sloping Top

### Features

- Suitable for use with 300/500/600/800 & 1000mm wide cabinets
- Prevents items being stored on the top of the cabinet and assists cleaning
- Increases the overall height of the cabinet by 110mm
- Available factory fitted, or for fitting to existing units

### Standard Colours

- Paint - White

Item	Description	Weight
PCST3	300mm Wide Cabinets	1.3kg
PCST5	500mm Wide Cabinets	1.5kg
PCST6	600mm Wide Cabinets	1.6kg
PCST8	800mm Wide Cabinets	1.8kg
PCST10	1000mm Wide Cabinets	2.0kg



## Tablet Counter

### Features

- Triangular stainless steel tablet counter
- Etched legend to interpret rows (max 22) into number of tablets

### Overall Dimensions (w x d x h)

- 205 x 195 x 10mm

Item	Description	Weight
PE/30	Tablet Counter	0.15kg



Remote Light Box

Features

- Connects to all Bristol Maid™ PC cabinets (with & without light) giving a remote visual indication that the cabinet is open

Item	Description	Overall Dimensions (w x d x h)	Weight
PC230	Box	100 x 50 x 175mm	0.5kg
PC235	Flush Mounting	100 x 50 x 150mm	0.2kg

Bedside Furniture & Equipment



Caretray Trolleys & Racks



Drug & Medicine Dispensing



Medical Records



## Auditable Access Control for Medicines Management



### What Is Cliq™ Remote?

ABLOY® CLIQ™ REMOTE is the very latest in user-friendly, web-based security management. Part of the ABLOY® PROTEC CLIQ™ range, CLIQ™ REMOTE is designed for remote sites, enabling the commissioning, programming and full administration of security management centrally via web-based software.

### How Does It Work?

ABLOY® CLIQ™ REMOTE integrates electronics into mechanical cylinders and keys, providing a security solution that can be managed remotely. In short, this works like an electronic handshake: when the key is inserted it engages with the cylinder, sending a random number back to the key. The key replies with an encrypted response which is decrypted by the cylinder and if valid the cylinder then allows access. It is important to remember that the mechanical combination must match as well as the digital combination. ABLOY® CLIQ™ REMOTE allows a single key to be used with multiple cabinets or trolleys.

### System Features

- Secure - Provides dual security through the patented ABLOY® PROTEC mechanical disc cylinders and keys along with DES encryption, a recognised electronic standard
- Easily Programmable - Keys can be added quickly and programmed to specific time and date schedules
- Fully Auditable- Audit trails can be accessed from both the cylinder and key
- Reduces Keys - One key can be programmed to open multiple cabinets or trolleys
- Easily Accessible - The CLIQ™ environment works in a cloud hosted server farm, maintained and supported by Abloy allowing remote user access via a secure connection from anywhere in the world
- Cost Effective - Low installation & maintenance costs along with a long lifecycle (requires no wires or system updates, power for the cylinder is provided by the key)
- Easily Retrofittable - CLIQ™ cylinders are designed to fit into Euro Profile mechanical lock cases

### System Benefits

- One key can be programmed to open multiple cabinets or trolleys
- The key is made personal to that member of staff, resulting in increased ownership and a reduction in the number of keys lost
- Easy to apply remote management, saves money and has the ability to cover several hospitals
- Time and date based access rights, with a full audit trail allow for full visibility of when visits were made
- New keys can be added to the system quickly and easily, removal of lost ones is hassle-free
- Reduction in time spent looking for keys

### Process Flow

#### Start of Shift



Nurse/member of staff places their key into the Wall PD to gain validation for their shift. If key transactions are present from the previous shift they will be automatically downloaded from the key and stored in the audit trail archive (server) prior to new authorisations being uploaded\*

#### During Shift



The key will only open cabinets where access permissions have been granted. Each time the key is used in a cabinet fitted with an ABLOY® PROTEC cylinder an audit trail is created on both the key and cylinder

#### End of Shift



Key is placed into the Wall PD. Previous key transactions are automatically downloaded from the key and stored in the audit trail archive (server)\*

In the event that the key is not placed into the Wall PD at the end of the shift, the audit trail is downloaded the next time the key is presented to the Wall PD. In the event that a key is lost, the lock cylinder can be interrogated by a programming key (the cylinder stores an audit trail of the last 1,000 key insertions)

Contact Our  
Sales Team  
For Your  
Demonstration



## System Components

### ABLOY® PROTEC CLIQ™ Key

- Provides dual security through the patented ABLOY® PROTEC mechanical disc cylinders and keys along with DES encryption, a recognised electronic standard
- Thin, light but incredibly strong key



### ABLOY® PROTEC CLIQ™ Lock Barrel

- A bump proof mechanism
- Exceptionally smooth key entry and operation
- Can be master keyed and keyed alike with cylinders, cam and furniture locks as well as padlocks



### Wall Programming Device

- Updates keys remotely (linking the server and users keys)
- Offers high level data encryption
- Allows the use of recurring validation, forcing users to validate their keys at the start of their shift whilst automatically downloading audit trails which are relayed to the server



### KeyAxxess (Key Safe)

- Allows integration of a key safe into the CLIQ™ system to control the issuing of keys
- Keys are accessed using existing (or new) security cards or pin number technology
- Holds up to 32 un-programmed keys, each ready to be 'handed out' (reports on key activity are easily accessible from the system)



## Questions & Answers

### Q Is the system expensive to install?

**A** The system has a low installation & maintenance cost along with a long life cycle. CLIQ™ cylinders are designed to fit into Euro Profile mechanical lock cases. No wiring is required to the cabinet. The wall programming device requires an Ethernet connection and power through a 12-24V adapter or alternatively power over Ethernet

### Q Who maintains the system?

**A** System maintenance is normally assigned to a member of the hospital staff who will be responsible for programming/issuing of keys along with interrogation of audit trails

### Q Is it possible to access the system remotely?

**A** The CLIQ environment works in a cloud hosted server farm, maintained and supported by Abloy. Access from anywhere in the world is possible utilising secure encryption via the internet. Allowing users to remotely provide access rights and retrieve audits on the fly

### Q How long do the batteries last?

**A** The battery is located in the key, not the cylinder. Under normal usage a battery will operate up to 20,000 cycles or 2 years

### Q What happens if a key is lost?

**A** In the event that a key is lost this can be quickly removed from the system, if subsequently found this can be added back and re-issued. In the event that an audit trail is required for a lost key, lock cylinders can be interrogated using a programming key (each cylinder stores an audit trail of the last 1,000 key insertions)

### Q How can I better control the issuing of keys?

**A** Through the use of ABLOY® KEYAXXESS (Key Safe) keys can be automatically assigned to specific users. Keys are issued using either the staff members own security card or via pin number technology.

Contact our sales team for more information

Misuse of Drugs  
Regulations

BS 3621

Compatible with  
**ABLOY PROTEC**  
Remote ready. See page 106

MS005

## Controlled Drug Cabinets - Multi-Point Locking

### Features

- Exceeds the statutory requirement for the storage of controlled drugs, "The Misuse of Drugs (Safe Custody) Regulations 1973"
- Independently security tested by Sold Secure attaining "Silver Accreditation" based on a realistic evaluation of the attack resistance of Controlled Drug Cabinets
- BS3621 anti pick and drill, key retaining six pin cylinder lock (supplied with 2 working keys and an identity card)
- Multi-point locking, operated using a handle mounted on the door (independently tested)
- Key profile unique to Hospital Metalcraft Ltd, offering 250,000 differs per profile
- Compatible with ABLOY® CLIQ™ Remote, integrating electronics into high security mechanical disc cylinders and keys, combining electronic security and remote management in real time
- Lock protected by hardened steel plates and stainless steel escutcheon
- 3.0mm mild steel, seamless welded construction
- Mounting holes provided in back (fixings not included)
- Fixed shelf, (see table below)

### Standard Colours

- Paint - White



MS010



MS015

Item	Description	Dimensions (w x d x h)	Shelves	Weight
MS005	Multi-Point Locking - Small	335 x 265 x 300mm	0	17.0kg
MS010	Multi-Point Locking - Medium	335 x 265 x 550mm	1	26.0kg
MS015	Multi-Point Locking - Large	500 x 300 x 550mm	1	37.0kg



## Controlled Drug Cabinets - Single Point Locking

### Features

- Exceeds the statutory requirement for the storage of controlled drugs, "The Misuse of Drugs (Safe Custody) Regulations 1973" (with the exception of CD040/CD045, CD050 & CD055)
- BS3621 anti pick and drill, key retaining six pin cylinder lock (supplied with 2 working keys and an identity card)
- Single-point locking
- Key profile unique to Hospital Metalcraft Ltd, offering 250,000 differs per profile
- Compatible with ABLOY® CLIQ™ Remote, integrating electronics into high security mechanical disc cylinders and keys, combining electronic security and remote management in real time
- Can be supplied with a micro-switch to allow connection to remote lighting/nurse call system by others (CD905), or supplied with a 12v DC lighting/warning system (CD910/CD911)
- 1.5mm mild steel, seamless welded construction
- Mounting holes provided in back (fixings not included)
- Adjustable & removable shelves (refer to table for details)
- Security of models CD005, CD010 & CD015 can be enhanced by concealing inside one of our 'Drug & Medicine Cabinets'
- Modular design allows for easy interchange with HTM 63 storage systems
- Supplied right hand hinging as standard, left hand available on request

### Standard Colours

- Paint - White

### Options

- CD910 - 12v DC LED Lighting/Warning System (CD005, CD010, CD015, CD020, CD025, CD040, CD055)
- CD911 - 12v DC LED Lighting/Warning System (CD030, CD035, CD045, CD050)
- Sloping tops available - Contact us for more information

Misuse of Drugs  
Regulations



BS 3621



Compatible with  
**ABLOY PROTEC**  
Remote ready. See page 106



#### CD910 & CD911- Optional 12v DC LED Lighting/Warning System

- Door activated micro-switch
- LED\* warning light illuminates
  - Green when closed
  - Red when open
  - Flashes red when open for 2 ½ minutes
- Volt-free contact to allow connection to an additional light/nurse call system

\*Externally mounted



CD005, CD015 & CD010



CD010 with 12v DC  
Lighting/Warning  
System

Dimensions (w x d x h)	Weight	Shelves	R/H Door	L/H Door
210 x 270 x 300mm	8.0kg	1	CD005	-
335 x 270 x 300mm	9.0kg	1	CD010	CD110
335 x 270 x 550mm	17.0kg	2	CD015	CD115
500 x 300 x 550mm	20.0kg	2	CD020	CD120
500 x 300 x 850mm	37.0kg	3	CD025	CD125
500 x 450 x 850mm	42.0kg	3	CD030	CD130
500 x 450 x 1250mm	59.0kg	4	CD035	CD135
500 x 300 x 1900mm	73.0kg	6	CD040	CD055
500 x 450 x 1900mm	91.0kg	6	CD045	CD050



CD020



CD025



CD030



CD035, CD045 & CD040





## Drug & Medicine Cupboards - Single Door, 870mm High



BU035

BS 2881:1989



BS 3621



Compatible with  
**ABLOY® PROTEC**  
Remote ready. See page 106



BU040



BU045

### Features

- Independently tested to BS2881: 1989 (Security Level One) Specification for Cupboards for the Storage of Medicines in Health Care Premises
- BS3621 anti pick and drill, key retaining five pin cylinder lock (supplied with 3 keys)
- Key profile unique to Hospital Metalcraft Ltd, offering 250,000 differs per profile
- Compatible with ABLOY® CLIQ™ Remote, integrating electronics into high security mechanical disc cylinders and keys, combining electronic security and remote management in real time
- Worksurface (removable to assist with positioning under existing worktops)
- 0.9mm mild steel welded construction
- Modular design allows for easy interchange with HTM 63 storage systems
- Available with plastic trays/shelves or shelves & dividers

### Plastic Trays

- Interchangeable with our popular CT range
- 3 x 100mm, 2 x 160mm Trays supplied per cupboard
- Internal tray dimensions 360 x 430mm (max load per tray 5kg)
- Each tray supplied with four removable dividers (2 x long, 2 x short) complete with a plastic clip on label cover
- Each cupboard is supplied with perforated coloured label strips (white, blue, green, yellow and red)

### Flat Shelves

- Down turned sides
- Adjustable at 50mm increments
- Capacity to hold 6 MDS frames
- 3 shelves per cupboard

### Shelves & Dividers

- Down turned sides
- Adjustable at 50mm increments
- Supplied with dividers to assist with the segregation of drugs & medicines (adjustable at approx 25mm increments)
- 3 shelves & 12 dividers per cupboard

### Overall Dimensions (w x d x h)

- 510 x 536 x 867mm

### Standard Colours

- Paint - White
- Worksurface - Beech

### Options

- 2LOCK014 - Push Button Mechanical Digital Lock
- BU901 - Joining Kit & Full Width Worktop (connects cupboards)

Right Hinged	Left Hinged	Description	Weight
BU035	BU050	Single Door, 870mm High, Plastic Trays	42.0kg
BU040	BU055	Single Door, 870mm High, Flat Shelves	37.0kg
BU045	BU060	Single Door, 870mm High, Shelves & Dividers	41.0kg

Drug & Medicine Cupboards - Single Door, 1850mm High

Features

- Independently tested to BS2881: 1989 (Security Level One) Specification for Cupboards for the Storage of Medicines in Health Care Premises
- BS3621 anti pick and drill, key retaining five pin cylinder lock (supplied with 3 keys)
- Key profile unique to Hospital Metalcraft Ltd, offering 250,000 differs per profile
- Compatible with ABLOY® CLIQ™ Remote, integrating electronics into high security mechanical disc cylinders and keys, combining electronic security and remote management in real time
- 0.9mm mild steel welded construction
- Modular design allows for easy interchange with HTM 63 storage systems
- Available with plastic trays/shelves or shelves & dividers

Plastic Trays

- Interchangeable with our popular CT range
- 7 x 100mm, 5 x 160mm Trays supplied per cupboard
- Internal tray dimensions 360 x 430mm (max load per tray 5kg)
- Each tray supplied with four removable dividers (2 x long, 2 x short) complete with a plastic clip on label cover
- Each cupboard is supplied with perforated coloured label strips (white, blue, green, yellow and red)

Flat Shelves

- Down turned sides
- Adjustable at 50mm increments
- Capacity to hold 6 MDS frames
- 8 shelves per cupboard

Shelves & Dividers

- Down turned sides
- Adjustable at 50mm increments
- Supplied with dividers to assist with the segregation of drugs & medicines (adjustable at approx 25mm increments)
- 8 shelves & 32 dividers per cupboard

Overall Dimensions (w x d x h) Options

- 500 x 530 x 1850mm

Standard Colours

- Paint - White

- 2LOCK014 - Push Button Mechanical Digital Lock
- BU902 - Joining Kit (connects cupboards)
- BUST/1 - Sloping Top

BS 2881:1989



BS 3621



Compatible with  
**ABLOY PROTEC**  
Remote ready. See page 106



Shelves/ Dividers



Flat Shelves



Trays



BU140

Right Hinged	Left Hinged	Description	Weight
BU125	BU140	Single Door, 1850mm High, Plastic Trays	77.0kg
BU130	BU145	Single Door, 1850mm High, Flat Shelves	68.0kg
BU135	BU150	Single Door, 1850mm High, Shelves & Dividers	78.0kg

## Patients/Residents Own Medication Cabinets - Self Administration

### Features

- Cabinets suitable for the storage of patients/residents own medication
- Suitable for use in self-administration schemes
- Suitable for use with...
  - Drugs retained in original packs
  - MDS frames with dividers & name cards (pocket fitted to door)
  - Nomad cassettes (pocket fitted to door)
  - Roll type blister packs
- Choice of side or bottom hinged cabinets fitted with either an electronic (battery operated) push button or CAM lock (supplied with two keys)
  - Electronic Push Button as below
  - CAM Lock - Uses 40 different master suites (for security we recommend that each ward operates a different series)
- Available with a solid door or with an inset perspex visibility panel
- Supplied with a self-adhesive name card holder (length 60mm)
- 0.9mm mild steel, spot welded construction
- Mounting holes in back/bottom (fixings not included)
- Range of mounting plates (optional)
- Shelves not included (optional)



SAC/313/S/VP - Shown with optional shelves

SAC/413/S

### Electronic Push Button Lock

- Uses a 10 button keypad and a # button. The # button is hidden beneath the handle when in the locked position
- Easy programming & code change
- Four operating codes with differing levels of authority
  - Master code
  - Sub-master code
  - User code
  - Technician code
- User codes are 4 digits
- Master & sub-master codes are 8 digits
- 15,000 openings on 2 x AAA cells (supplied)
- Low battery warning with failure override using 9v battery across LED's (+/-) & master code



### Side Hinged

Dimensions (w x d x h)	CAM Lock		Electric Push Button Lock		Weight	Shelf Compatibility
	Solid Door	Perspex Visibility Panel	Solid Door	Perspex Visibility Panel		
210 x 155 x 315mm	SAC/213/S	SAC/213/S/VP	SAC/213/S/CL	SAC/213/S/CL/VP	2.6kg	SAC/FS/2, SAC/BS
310 x 155 x 315mm	SAC/313/S	SAC/313/S/VP	SAC/313/S/CL	SAC/313/S/CL/VP	3.4kg	SAC/FS/3, SAC/BS
410 x 155 x 315mm	SAC/413/S	SAC/413/S/VP	SAC/413/S/CL	SAC/413/S/CL/VP	4.1kg	SAC/FS/4, SAC/BS
315 x 110 x 245mm	SAC/QMC/BS	SAC/QMC/S/VP	SAC/QMC/S/CL	SAC/QMC/S/CL/VP	2.3kg	SAC/QMC/BS



SAC/313/S/MD



SAC/413/S/MD

Side Hinged - Blister Cards / Nomad Cassettes

Dimensions (w x d x h)	CAM Lock Solid Door	Electric Push Button Lock Solid Door	Weight	Shelf Compatibility
310 x 155 x 315mm	SAC/313/S/MD	SAC/313/S/MD/CL	3.6kg	SAC/FS/3, SAC/BS
410 x 155 x 315mm	SAC/413/S/MD	SAC/413/S/MD/CL	4.4kg	SAC/FS/4, SAC/BS



SAC/213/B

SAC/413/B



SAC/313/B - Shown with optional shelves



SAC/413/B

Bottom Hinged

Dimensions (w x d x h)	CAM Lock		Electric Push Button Lock		Weight	Shelf Compatibility
	Solid Door	Perspex Visibility Panel	Solid Door	Perspex Visibility Panel		
210 x 155 x 315mm	SAC/213/B	SAC/213/B/VP	SAC/213/B/CL	SAC/213/B/CL/VP	2.6kg	SAC/FS/2, SAC/BS
310 x 155 x 315mm	SAC/313/B	SAC/313/B/VP	SAC/313/B/CL	SAC/313/B/CL/VP	3.4kg	SAC/FS/3, SAC/BS
410 x 155 x 315mm	SAC/413/B	SAC/413/B/VP	SAC/413/B/CL	SAC/413/B/CL/VP	4.1kg	SAC/FS/4, SAC/BS
315 x 110 x 245mm	SAC/QMC/B	SAC/QMC/B/VP	SAC/QMC/B/CL	SAC/QMC/B/CL/VP	2.3kg	SAC/QMC/BS



SAC/BS - Enables bottles to be stored alongside



SAC/FS/3

## Shelves

### Features

- 100mm deep flat/bridge shelves
- Removable to assist cleaning

### Standard Colours

- Paint - White

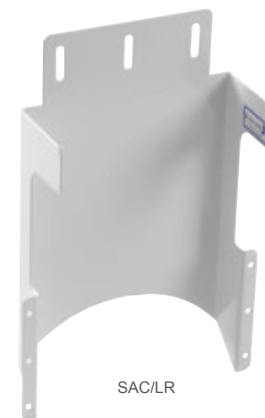
Item	Description	Weight
SAC/FS/2	Shelf - 200mm Wide Cabinets (SAC/213/S & SAC/213/B)	0.16kg
SAC/FS/3	Shelf - 300mm Wide Cabinets (SAC/313/S, SAC/313/B & SAC/313/S/MD)	0.23kg
SAC/FS/4	Shelf - 400mm Wide Cabinets (SAC/413/S, SAC/413/B & SAC/413/S/MD)	0.30kg
SAC/BS	Bridge Shelf - All cabinets except SAC/QMC/B & SAC/QMC/S	0.19kg
SAC/QMC/BS	Bridge Shelf - QMC Cabinets (SAC/QMC/S & SAC/QMC/B)	0.15kg



SAC/WP



SAC/LT



SAC/LR

## Mounting Plates

### Features

- Compatible with all SAC cabinets using existing holes (fixings not provided)
- SAC/WP - Cabinet secured to wall plate using a small thumbscrew
- SAC/LR - Mounts to rear panel of a traditional bedside cabinet (requires minimum 120mm high panel for fixings)
- SAC/LT - Mounts to upper surface of traditional bedside cabinet

### Standard Colours

- Paint - White

Item	Description	Overall Dimensions	Weight
SAC/WP	Mounting Plate - Wall	190 x 12 x 162mm	0.5kg
SAC/LR	Mounting Plate - Locker Rear	215 x 80 x 330mm	0.7kg
SAC/LT	Mounting Plate - Locker Top	190 x 150 x 150mm	0.9kg

Patients/Residents Own Medication Cabinets  
- Monitored Dosage, MDS Frames

Features

- Designed for use in residents rooms
- Suitable for the storage of MDS frames with dividers and name cards (max 100mm depth)
- Models available to hold one or two frames (not included)
- Single-point locking using a CAM lock (supplied with 2 keys)
- Mounting holes provided in back (fixings not included)
- Supplied with adjustable shelf/shelves
- Constructed from melamine faced MDF
- MDS frames not supplied

Standard Colours

- Body/Door - Beech Woodgrain

Electronic Push Button Lock

- Uses a 10 button keypad and a # button. The # button is hidden beneath the handle when in the locked position
- Easy programming & code change
- Four operating codes with differing levels of authority
  - Master code
  - Sub-master code
  - User code
  - Technician code
- User codes are 4 digits
- Master & sub-master codes are 8 digits
- 15,000 openings on 2 x AAA cells (supplied)
- Low battery warning with failure override using 9v battery across LED's (+/-) & master code

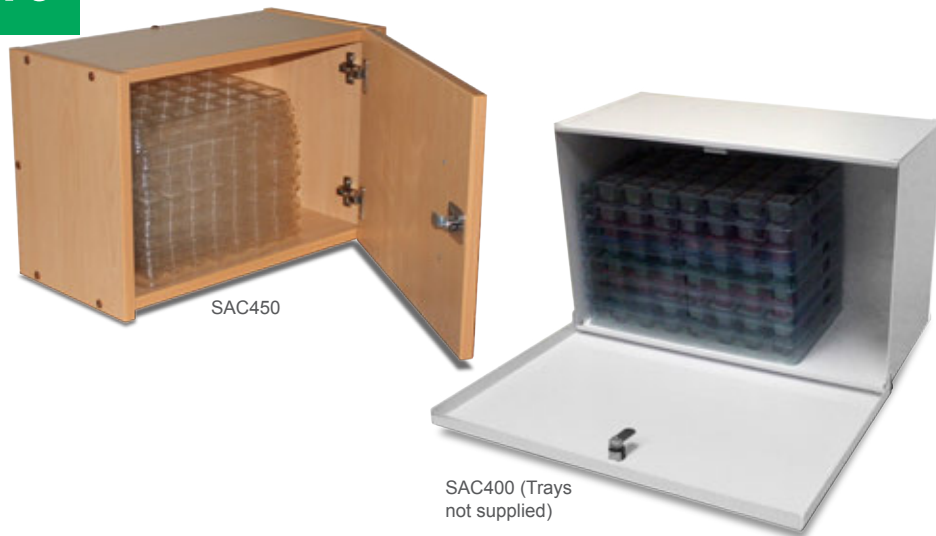


SA040

SA045

Item	Description	Dimensions (w x d x h)	Weight
SA040	Small - 1 x Frame Capacity, CAM Lock	325 x 245 x 420mm	7.4kg
SA045	Large - 2 x Frame Capacity, CAM Lock	325 x 245 x 775mm	12.0kg
SA040/CL	Small - 1 x Frame Capacity, Electronic Push Button Lock	325 x 245 x 420mm	7.5kg
SA045/CL	Large - 2 x Frame Capacity, Electronic Push Button Lock	325 x 245 x 775mm	12.1kg





## Patients/Residents Own Medication Cabinets - Monitored Dosage, Biodose® Trays

### Features

- Designed for use in residents rooms
- Suitable for the storage of Biodose® Trays
- Capacity for ten trays & two bottles\*
- Single-point locking using a CAM lock (supplied with 2 keys)
- Mounting holes provided in back (fixings not included)
- Constructed from metal or melamine faced MDF

\*Bottle 105mm diameter x 250mm high

### Standard Colours

- SAC400 - White
- SAC450 - Beech Woodgrain

Item	Description	Dimensions (w x d x h)	Weight
SAC400	Metal, Bottom Hinged	480 x 240 x 315mm	5.0kg
SAC450	Wooden, Side Hinged	510 x 255 x 340mm	8.9kg



## Storage Boxes - Lightweight

### Features

- Lightweight aluminium riveted construction
- Fitted with handle
- Single-point locking using a CAM lock (supplied with 2 keys)

### Standard Colours

- Paint - White

Item	Description	Dimensions (w x d x h)	Weight
SB/221	Storage Box - Small	200 x 200 x 150mm	0.9kg
SB/321	Storage Box - Medium	300 x 200 x 150mm	1.1kg
SB/421	Storage Box - Large	400 x 200 x 150mm	1.4kg

## Pharmacy & Vaccine Refrigerators - IntelliCold™, Solid & Glass Doors

### Features

- Compliant with the Department of Health Green Book
- Recommendations in The Royal Pharmaceutical Society of Great Britain's 'Code of Ethics & Standards'
- National Travel Health Network and Centre - Yellow Book
- Royal College of Veterinary Surgeons Guidelines
- Designed specifically for the safe storage of vaccines and pharmaceuticals
- Available as bench top, under bench, wall fitting or free-standing
- Temperature range +2°C to +8°C
- IntelliCold™ controller
  - Min/max temperature control, display & recording
  - Door open/power failure/high & low temperature alarms (remote alarm contacts)
  - 13 month temperature data storage (free SD card upon warranty registration)
  - Battery back-up
- Off cycle auto defrost
- Fan assisted cooling
- Environmentally friendly refrigerant (CFC, HCFC and Ammonia free)
- Door lock with two keys
- Real time temperature display
- Internal light
- Adjustable shelves
- UKAS traceable calibration service (optional extra)

Department of Health  
Green Book



5RLDF0110

### Standard Colours

- Exterior - White/Blue
- Interior - White

Item	Capacity (Litres)	Dimensions (w x d x h)	Description	Shelves	Energy Consumption	Weight
Solid Door						
5RLDF0110	36	450 x 485 x 535mm	Bench/Wall Mounting*	2	0.59 kWh/24h	26.0kg
5RLDF0210	66	450 x 485 x 720mm	Bench/Wall Mounting*	3	0.63 kWh/24h	28.0kg
5RLDF0510	150	600 x 610 x 820mm	Under Bench	3	0.66 kWh/24h	38.0kg
5RLDF1010	300	600 x 660 x 1500mm	Free Standing	6	0.67 kWh/24h	64.0kg
5RLDF1510	430	600 x 700 x 1860mm	Free Standing	6	1.1 kWh/24h	74.0kg
Glass Door						
5RLDG0510	150	600 x 610 x 820mm	Under Bench	3	0.66 kWh/24h	43.0kg
5RLDG1010	300	600 x 660 x 1500mm	Free Standing	6	0.67 kWh/24h	72.0kg
5RLDG1510	430	600 x 700 x 1860mm	Free Standing	6	1.1 kWh/24h	84.0kg

\*Integral Wall Mounting Brackets



5RLDG0510

Sales Hotline: +44 (0)1258 484455

www.bristolmaid.com